

REBHAN®

Kunststoffverpackungen

REBHAN FPS Kunststoff-Verpackungen GmbH

Kronacher Straße 19 | D-96342 Stockheim

E-Mail: info@rebhan.de

Telephone: +49 9265 750



www.rebhan.de



March 2026 | Subject to change

REBHAN®

Kunststoffverpackungen

CERTINA PACKAGING GROUP

Achieving More Together - Beyond Borders.

The companies in the **CERTINA PACKAGING GROUP** are highly specialized experts for innovative and sustainable plastic packaging, and can look back on a total of 300 years of plastic processing experience.

Thanks to our different manufacturing technologies, which range from **injection moulding** to **plastic blowing processes** and **co-extrusion**, we offer our customers the major advantage of implementing the best possible packaging solution for their product lines across companies. The cosmetics industry is particularly reliant on our expertise for producing top quality brand packaging.

Our comprehensive **standard portfolio ranges** from bottles and flacons with a wide variety of closing and dispensing options to jars and cans and also sticks and roll-ons. However, we also develop **tailored solutions** for customer-specific packaging requirements. Our wide range of in-house refining techniques such as screen printing, lacquering, hot foil stamping and metallization are an invaluable advantage, which give the brand packaging the company's individual look and make it unmistakable.





REBHAN – YOUR PARTNER

for Innovative, High-Quality and Sustainable Packaging Solutions.

As a competent specialist for **high-quality plastic packaging**, we collaborate with numerous, internationally renowned brands from the cosmetics, parapharmaceutical and household sectors.

We offer you a wide range of high-quality standard bottles as well as **customised packaging solutions** precisely tailored to your products and requirements. We can offer inhouse solutions, that with your co-operation, will deliver really innovative ideas and individual solutions for your products. At REBHAN, we can provide everything you require out of one hand: from product-specific development and customised decoration to professional project management!

Thanks to our two subsidiaries REBHAN OPAKOWANIA (Poland) and TRASSL POLYMER SOLUTIONS (Germany), we are able to increase our production capacity and expand our range of products in the chemical sector.



CUSTOMER-SPECIFIC DEVELOPMENTS

Unique Products Need Distinctive Packaging.

Do you have a very specific packaging idea that would perfectly present your product? A flacon, bottle or roll-on with characteristic features not yet seen on the market? We are happy to accept this challenge and develop an individual approach with you.

Our **customised development process** starts with design feedback on the feasibility of your individual bottle shape, followed by the manufacturing of prototypes. After the definition of the desired material composition and with due consideration of the environmental specifications, we start the serial production – including the development and manufacture of your individual tooling, finishing, quality control and shipping.

Thanks to the **professional support** of our experienced experts, creating a tailor-made solution is easier than you may think.



^ More references in our blog at rebhan.de/blog.html

EVOLUTION HDPE



COLONNA LOW SHAPE PP



COLONNA GLASS-LIKE



OPTIMA HDPE



FOAMER HDPE



BRIA LOW SHAPE HDPE



SPA DE LUXE GLASS-LIKE & SPA HDPE



OUR STANDARD RANGE

Extraordinary Forms – Individual Configurations & Finishes.

Thanks to decades of experience in the development of plastic packaging, we can offer you a broad portfolio of high-quality standard series, which is consistently being expanded.

- > Variety of **shapes** – round, oval or square
- > Wide range of **materials** – HDPE, PET, Heavy Wall PET or Glass-like PET
- > Various **recycled** materials and **biobased** alternatives
- > Different **weights** or **material mixtures** (LDPE, HDPE)
- > New range of **airless products**
- > Wide range of **volumes** – from 7.5 ml to 1,000 ml
- > Variably configurable through different **closures** and **accessories**

All standard series can be produced in the colour of your choice and finished in our inhouse decoration department. Of course, all our products are also available in sustainable materials or can be manufactured with various shares of recycled plastics.



FOAMER PET



GLASS-LIKE POLYMERS

An Innovative Packaging Material
with Unique Characteristics.



REBHAN Glass-like flacons impress due to their **striking resemblance to glass**: from their brilliance and typical light refraction to their absolute transparency. They convey the feel of luxury and are certain to perfectly showcase your product with their thick gauge walls and bases. In addition, Glass-like products are **exceptionally robust** and **ideal for daily use** both at home and when travelling. Their extreme resilience makes them **virtually unbreakable**, and protects the contents, the customers and their surroundings.

The colouring of the Glass-like products forms part of the extrusion process and the wide range of our inhouse finishing options enhance the customisation possibilities. The innovative development of recyclable polymers with molecular recyclates specifically for the extrusion blow moulding process now also allows for sustainable options.





ELIXIR
GLASS-LIKE



PURE
GLASS-LIKE

QUATTRO & QUATTRO SLIM
GLASS-LIKE



EDGE
GLASS-LIKE



BRIA
HDPE



BRIA FOAMER
HDPE



BRIA
GLASS-LIKE



DIAMOND
GLASS-LIKE



ROLL-ON
GLASS-LIKE



BRIA SLIM
HEAVY WALL PET

Here we have compiled a small selection of our

REBHAN STANDARD SERIES



BRIA
PET



COLONNA LOW SHAPE
GLASS-LIKE



SPA DELUXE
GLASS-LIKE

COLONNA
GLASS-LIKE



BRIA
HEAVY WALL PET



BRIA LOW SHAPE
HDPE



HEAVY WALL PET

Heavy Wall PET provides your packaging with **much higher stability and strength**. They are not only easily **recyclable** but can also be produced from even **recycled PET** on request.



PET²AIR

Pouch-in-Bottle Airless-Packaging

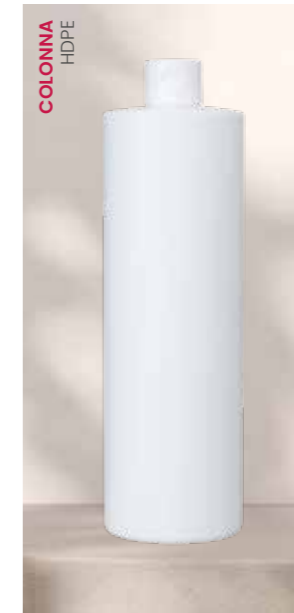
Emptying Capability approx. **97%**

INNOVATION

Our sustainable packaging solution that combines product protection and sustainability without design restrictions.

Packaging innovation made from monomaterial PET (outer bottle PET or rPET, pouch virgin PET) reliably **protects the formulation from air, contamination and oxidation**. At the same time, it allows for **almost complete and residue-free removal** – for particularly efficient use of cosmetic and skincare products.

In cooperation with **INOTECH**





The complete REBHAN standard range, all volumes, materials and accessories can be found in our **online product catalogue**.
Accessible at any time and from anywhere at

catalogue.certinapackaging.com





In **co-extrusion**, recycled or bio-based materials can be integrated as an inner layer (up to 50 %), while virgin material on the outside ensures a high-quality appearance and on the inside provides reliable product protection.

CO-EX



OUR GREEN LINE CONCEPT

We Set the Course towards Sustainability at an Early Stage.

Environmental awareness is prioritized in all company processes. We constantly implement this focus in the development of new, sustainable packaging solutions. In addition, we continuously research environmentally friendly alternatives for packaging without compromising the exclusivity of the final product.

No matter which form of packaging you choose, we will find a sustainable way to produce it!

- > **Recycled** materials / PCR (rPET, rHDPE, rPP)
- > **Ocean Bound** materials
- > **Biobased** materials (e.g. from tall oil or sugarcane)
- > **Molecular** recycling
- > **REFILL** solutions

The use of special, non-standard materials requires a high degree of expertise and experience. The professional and successful handling of such materials is one of our core competencies.

Learn more about our Green line concept >



DECORATIVE FINISHINGS

Customize your Packaging.

Our wide range of decorative finishing options and many years of experience in decorating plastic packaging leave no design wishes unfulfilled.

- > **Screen printing,**
- > **Hot foil stamping,**
- > **Lacquering** (matte / glossy, special effect, gradient),
- > **Metallisation** or
- > **Lasermarking**

are effected inhouse - you receive everything from a single source and have just one contact person.

Enhance your packaging with an extraordinary feel, texture or embossing, which we realise with tooling specifically developed for your product. Or upgrade your bottle with exceptional masterbatches such as the iridescent batch, Frost-Batch or Adflex.

Learn more about our wide range of inhouse decoration options >



METALLISATION



HOT FOIL STAMPING



HOT FOIL STAMPING



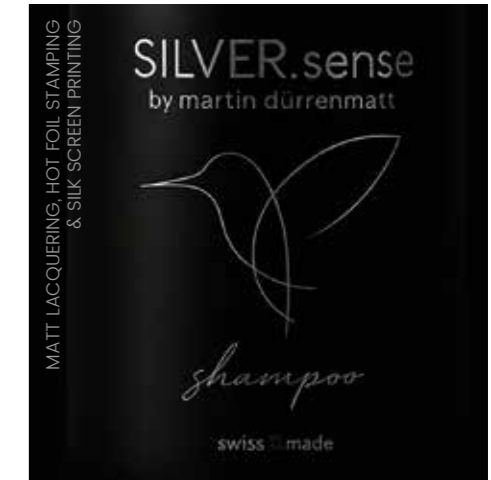
MATTE & GLOSSY LACQUER



STRUCTURE WITHIN THE TOOL



SILK SCREEN PRINTING & HOT FOIL STAMPING



MATT LACQUERING, HOT FOIL STAMPING & SILK SCREEN PRINTING



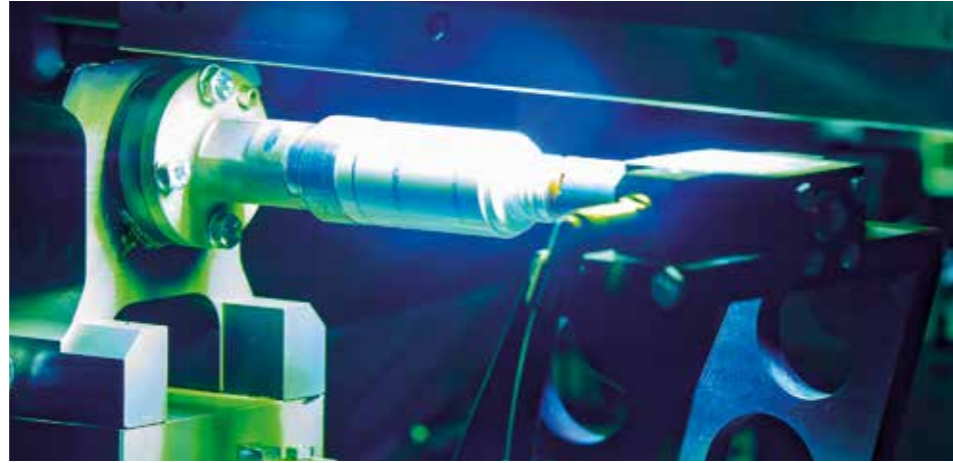
LASERMARKING



IRIDESCENT COLOUR BATCH



GRADIENT LACQUERING



REBHAN TECHNOLOGIES

State-of-the-Art Technology Allows for Maximum Flexibility.

In order to process diverse types of plastics and to create exceptional packaging, we work with a wide variety of manufacturing processes and the most current machinery in our production division:

- > **Extrusion blow moulding** (EBM)
- > **Co-extrusion** (Co-EX)
- > **Injection stretch blow moulding** (ISBM)
- > **Injection blow moulding** (IBM)
- > **Injection moulding** (IM)

We prioritise the professional use of cutting-edge technologies – be it in production or decoration. To ensure consistent top quality, flexibility and efficiency, we continuously invest in our machinery pool. Recently, we have enhanced it by **two state-of-the-art five-colour screen printing machines** as well as a **coating system**.

[Learn more about our production technologies >](#)





HK COSMETIC PACKAGING GMBH

HK COSMETIC PACKAGING GmbH

Fabrikweg 3 | D-96450 Coburg

E-Mail: info@hkoch.de

Telephone: +49 9561 240-0



www.hkoch.de



March 2026 | Subject to change



HK COSMETIC PACKAGING GMBH

CERTINA PACKAGING GROUP

Achieving More Together - Beyond Borders.

The companies in the **CERTINA PACKAGING GROUP** are highly specialized experts for innovative and sustainable plastic packaging, and can look back on a total of 300 years of plastic processing experience.

Thanks to our different manufacturing technologies, which range from **injection moulding** to **plastic blowing processes** and **co-extrusion**, we offer our customers the major advantage of implementing the best possible packaging solution for their product lines across companies. The cosmetics industry is particularly reliant on our expertise for producing top quality brand packaging.

Our comprehensive **standard portfolio ranges** from bottles and flacons with a wide variety of closing and dispensing options to jars and cans and also sticks and roll-ons. However, we also develop **tailored solutions** for customer-specific packaging requirements. Our wide range of in-house refining techniques such as screen printing, lacquering, hot foil stamping and metallization are an invaluable advantage, which give the brand packaging the company's individual look and make it unmistakable.





HK COSMETIC PACKAGING

Beauty Packaged in Exquisite Brand Quality.

With over 100 years of experience and our state-of-the-art production, we are absolute **experts in injection moulding and compression moulding**. We specialize in innovative, premium plastic packaging for international customers, mainly from the cosmetics industry.

Our **high-quality standard range** of single and double walled as well as brilliant thick walled jars, exceptional sticks and roll-ons as well as matching closure options leaves nothing to be desired. Thanks to our **first-class finishing techniques**, we can impart a unique character to your brand packaging. Naturally, we also develop **custom-made solutions** for your completely individual packaging needs together with our inhouse toolmaking department.

We provide you with a complete comprehensive solution for your brand packaging – everything from consulting, design, development and material selection to toolmaking, project and quality management, through to serial production, finishing and supply chain management. We offer everything from a single source – competent and **made in Germany**.

CUSTOMER-SPECIFIC DEVELOPMENTS

Unique Products Need Distinctive Packaging.

We provide you with expert support and advice – not just regarding our standard range. Together with you, we develop the perfect combination of shape, material and finishing for your special, unique packaging design.

Our **customized development process** starts with design feedback on the feasibility of your desired packaging shape, followed by the manufacturing of prototypes. After the definition of the desired material composition and with due consideration of the environmental specifications, we commence with the serial production – including the development and manufacture of your individual tooling, finishing, quality control and shipping.

Thanks to the **professional support** of our experienced experts, creating a tailor-made solution is easier than you may think.





KYRA



BRIANA



ANTONELLA

OUR STANDARD RANGE

Extraordinary Forms – Individual Configurations & Finishes.

Thanks to decades of experience in the development of plastic packaging, we can offer you a broad portfolio of high-quality standard series, which is consistently being expanded.

- > Variety of **jars** – single walled, double walled, thick walled and REFILL
- > Numerous **other products**: sticks, roll-ons, lip balms, wet wipe containers
- > Wide range of **virgin materials** – PET, PP, PS, HDPE, etc.
- > Various **recycled** materials and **biobased** alternatives
- > Wide range of **volumes** – from 5 ml to 500 ml
- > Variably configurable through different **closures** and **accessories**

All standard series can be produced in the colour of your choice and finished in our inhouse decoration department. Of course, all our products are also available in sustainable materials or can be manufactured with various shares of recycled plastics.



ANTONELLA



BELINDA



DIEGO ONE LINE



FUTURA



GABRIELA





PET CLARO

Our highly transparent jars made of PET CLARO convey luxurious value and, with their thick walls and solid bases, are guaranteed to put your product in the limelight. Our extensive range of inhouse finishing options extends the possibilities of individualization.

Sustainable options are now also possible thanks to the development of a new recyclable polymer with molecular recyclates.



INA
PET, PP, PS, SAN

THICK WALLED CREAM JARS

Here we have compiled a small selection of our standard series for you. All products are available at any time in our online product catalogue.



KYRA & KYRA REFILL
PET, PP, PS, SAN



KRISTALL
PET, PP, PS, SAN



KIM & KIM REFILL
PET, PP, PS, SAN



LIGHT WEIGHT

KRISTALL
PET, PP, SAN

KYRA LIGHT
PP



JANA
PP



CELINA
PP, SAN



ANTONELLA
PP



NORA
PP



ARIELLA
PP



ANTONIA
PP

SINGLE WALLED CREAM JARS



A selection from our standard range.



DOUBLE WALLED CREAM JARS

A selection from our standard range.



GABRIELA
PP



BELINDA
PP



MIA
PS, SAN



NENA
PP



BRIANA
PET, PP



MIXED SELECTION
PET



GABRIELA
PP

PALOMA
PP



MINIS

5 to 20 ml



ANTONELLA
PP



KYRA
PET, PP, PS



FLAVIO
PP



BENNO
HDPE



ROLL-ONS

A selection from our standard range.

The complete standard range of HK COSMETIC PACKAGING,
all volumes, materials and accessories
can be found in our **online product catalogue**.
Accessible at any time and from anywhere at

catalogue.certinapackaging.com



NORA
PP

MONA
PP



FUTURA
PP



BUBBLE
PP



Elegant Colour Cosmetics

Elegant design, optimal functionality and complete sustainability.

The ergonomic design, lightweight construction and smooth twist mechanic ensure effortless use. The protective cap blends seamlessly with the casing, adding a refined touch for a sleek, elegant look. Made entirely from monomaterial PP, the stick is 100% recyclable.



INNOVATIONS



REFILL REPLACE REUSE

INA LIGHT



BRIANA



ANTONIA



KIM



RECYCLED MATERIALS

OCEAN BOUND



SUGARCANE



HDPE Braskem

Teralene 3509

BIOBASED MATERIALS



RECYCLED MATERIALS

rPP



TruCircle™

BIOBASED MATERIALS



TALL-OIL

OUR GREEN LINE CONCEPT

We Set the Course towards Sustainability at an Early Stage.

Environmental awareness is prioritized in all company processes. We constantly implement this focus in the development of new, sustainable packaging solutions. In addition, we continuously research environmentally friendly alternatives for packaging without compromising the exclusivity of the final product.

No matter which form of packaging you choose, we will find a sustainable way to produce it!

- > **Recycled** materials / PCR (rPET, rHDPE, rPP)
- > **Ocean Bound** materials
- > **Biobased** materials (e.g. from wood chips, tall oil, sugarcane or lactic acid)
- > **Molecular** recycling
- > **REFILL** solutions

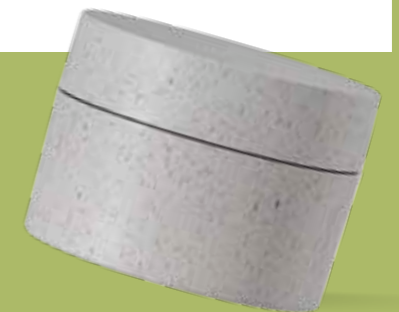
The use of special, non-standard materials requires a high degree of expertise and experience. The professional and successful handling of such materials is one of our core competencies.



hkoch.de/green-line-en.html



ARCTIC
SULAPAC PREMIUM 40



DECORATIVE FINISHING

Customize your Packaging.

Our wide range of finishing options and many years of experience in decorating plastic packaging leave no design wishes unfulfilled.

- > **Screen printing**
- > **Hot foil stamping**
- > **Lacquering** (matte / glossy, special effect, gradient)
- > **Metallisation**
- > **Lasermarking**

With us, you get everything from a single source and have a single point of contact. Enhance your packaging with an extraordinary feel, texture or embossing, which we realise with tooling specifically developed for your product. The injection tool can also be used to create a frosted look or you can boost your packaging with an iridescent masterbatch.

Let your creativity run free - our experts will be happy to advise you!



METALLISATION



PEARL EFFECT



SILK SCREEN PRINTING



SILK SCREEN PRINTING



EMBOSSING



SILK SCREEN PRINTING (FIVE COLOURS)



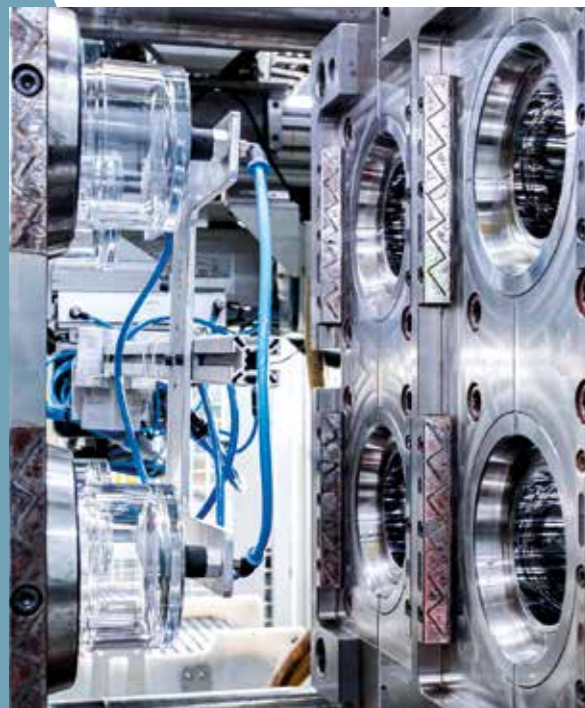
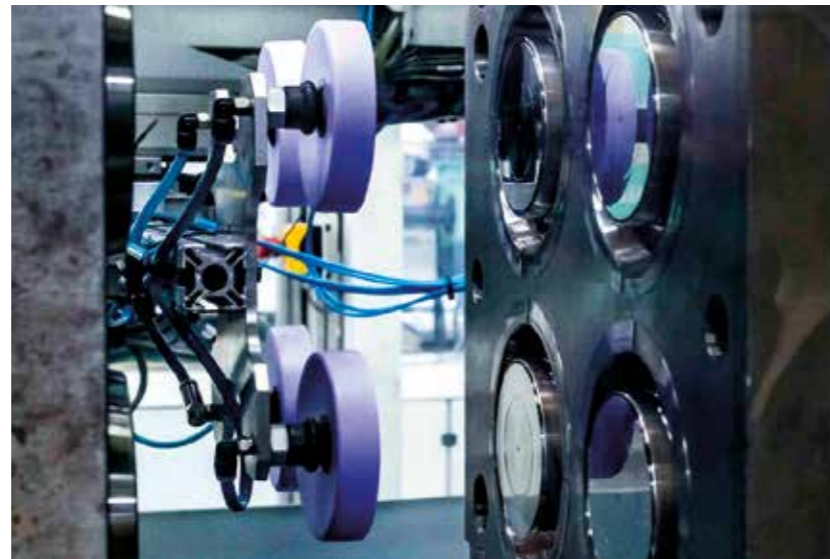
SCREEN PRINTING & HOT FOIL STAMPING



LASERMARKING



MATTE FINISH



OUR TECHNOLOGIES

State-of-the-Art Technology Allows for Maximum Flexibility.

In order to process diverse types of plastics and to create exceptional packaging, we work with a wide variety of manufacturing processes and the most current machinery in our production division:

- > **Injection moulding** (IM)
- > **Injection blow moulding** (IBM)
- > **Compression moulding** (CM)
- > **Assembly**

Our **inhouse toolmaking department** serves as the starting point for all our standard series and is the ideal solution for clients who desire customized packaging.

We prioritise the professional use of **cutting-edge technologies**. To ensure consistent top quality, flexibility and efficiency, we continuously invest in our machinery pool. This enables us to secure our competitiveness and underline our commitment to producing the highest quality packaging solutions of tomorrow.





OUR PRODUCT
YOUR IDENTITY

QUALIFORM
COSMETIC PACKAGING

ABOUT QUALIFORM

Qualiform is a French-based producer of **cosmetic plastic bottles**. We produce the packaging for dozens of international firms like Chanel, Estée Lauder, LVMH... We provide elegant **standard bottles** that you can easily customize (material, coloration, decoration...), as well as **customized packaging** solutions (your own mold, shape, design...).

We support you throughout the entire process, all the way from design selection and development to after-sale service. We make sure to use the most appropriate and innovative materials for your cosmetic packaging.

Brands can choose from our extensive array of decoration technologies to make their packaging truly unique, including **silk-screening or hot-stamping**.

Qualiform is a Certina Packaging company.





CUSTOMIZED DEVELOPMENTS

Our standard packaging lines are extraordinary, but if your company requires something more specialized, something **totally unique** and never seen before, our custom solutions are perfect.

We begin with design feedback on viability – your **own bottle shape**, move into exacting compatibility tests, create prototypes, and then move directly into full runs, including manufacturing – development of your **own mold**, decorating, finishing, QA and shipping.

Creating a custom solution is **easier** than you think, particularly when you consider how much support you'll receive from our talented experience experts.

STANDARD PACKAGING

Qualiform offers a wide choice of **standard bottles** in PET, PP, HDPE... These lines, from **10ml to 500ml**, can be customized with your masterbatch and your decoration. To support the circular economy, all these packagings have been developed at the right weight, are available in recycled materials, and are recyclable. In order to facilitate your product development, we have also approved closures from our European partners.





CIRCULAR ECONOMY

Each Qualiform bottle is eco-designed. Standard and customized developments respect the 5Rs to support a circular approach.

Reduce: the right weight, new Georgia Light, sustainable matte finishing

Recycle: recyclable materials (PET, PP, PE...), mono-material packaging

Reuse: mechanical or chemical recycled materials (PCR PET ultra clear, PCR PP, PCR HDPE, Cristal Renew...)

Renew: bio-sourced materials

Refill: screw neck, innovative developments...



STANDARD BOTTLES

CYLINDRICAL SHAPES

Alizée	12
Georgia PET	14
Georgia PP, PE	16
Overcap bottles	18
Breezie	20
Evasion	22

SQUARE SHAPES

Quadratus	24
-----------	----

RECTANGULAR SHAPES

Elegance	26
Square	28

BOSTON SHAPES

Absolue	30
Boston	32

CONICAL SHAPES

Horizon	34
Qualiderma	36

OVAL SHAPES

Make Up	38
Harmonie	40

TOTTLES


Perla	42
Joyce	44
Horizon tottle	46

EACH BOTTLE CAN BE COLORED AND DECORED



ALIZÉE



Size	Neck*	Diameter	Material 
100 ml	24/410	50 mm	PP/PE/Soft touch
200 ml	24/410	65 mm	PP/PE/Soft touch
200 ml	24/410	59 mm	PET
300 ml	28/410	64 mm	PP/PE/Soft touch

 All bottles are available in mechanical recycled PET, PP or PE and in bio-sourced.

* Many closures are approved for these bottles, please contact us.



GEORGIA PET


Size	Neck*	Diameter	Material 	Light Weight
10 ml	E4	21 mm	PET	
20 ml	20/410	25,5 mm	PET	
30 ml	20/410	32 mm	PET	
50 ml	20/410	32 mm	PET	✓
100 ml low shape	24/410	38,5 mm	PET	
120 ml low shape	24/410	40,5 mm	PET	
150 ml low shape	24/410	42,7 mm	PET	✓
150 ml	24/410	40,6 mm	PET	
200 ml low shape	24/410	47 mm	PET	✓
200 ml medium	24/410	45 mm	PET	✓
200 ml	24/410	44 mm	PET	✓
250 ml low shape	24/410	50 mm	PET	
400 ml low shape	24/410	62,6 mm	PET	✓
400 ml medium	24/410	57,5 mm	PET	✓
500 ml	24/410	67 mm	PET	✓

 All bottles are available in mechanical or chemical recycled PET.

* Many closures are approved for these bottles, please contact us.



GEORGIA PP/PE



Size	Neck*	Diameter	Material 
10 ml	E4/E5	21 mm	PP/PE/Soft touch
15 ml	E4	19 mm	PP/PE/Soft touch
30 ml	22/400, Twisto	32 mm	PP/PE/Soft touch
50 ml	22/400, 18/400, Twisto	32 mm	PP/PE/Soft touch
75 ml	22/400, Twisto	32 mm	PP/PE/Soft touch
100 ml	24/410, 20/410	35 mm	PP/PE/Soft touch
150 ml	24/410, Twisto	40 mm	PP/PE/Soft touch
200 ml	24/410, 22/400	44 mm	PP/PE/Soft touch
250 ml	24/410, Twisto	47 mm	PP/PE/Soft touch
400 ml	24/410, Twisto	54,5 mm	PP/PE

 All bottles are available in mechanical recycled PP or PE and in bio-sourced.

* Many closures are approved for these bottles, please contact us.




OVERCAP BOTTLES

Size	Neck*	Diameter	Material 
80 ml	20/410	39 mm	PP/PE/Soft touch
100 ml	 24/410	40 mm	PET

 All bottles are available in mechanical recycled PET, PP or PE and in bio-sourced.

* Many closures are approved for these bottles, please contact us.

BREEZIE

Size	Neck*	Diameter	Material 
100 ml	24/410	40 mm	PP/PE/Soft touch
30 ml	TBC	32mm	PP/PE/Soft touch
50 ml	TBC	32 mm	PP/PE/Soft touch
200 ml	24/410	TBC	PP/PE/Soft touch
200 ml	24/410	TBC	PET
400 ml	TBC	TBC	PP/PE/Soft touch
400 ml	24/410	TBC	PET




 All bottles are available in mechanical recycled PP or PE and in bio-sourced.

* Many closures are approved for these bottles, please contact us.



EVASION

Size	Neck*	Diameter	Material 
100 ml	22/400	38 mm	PP/PE/Soft touch
200 ml	24/410, 22/400	48 mm	PP/PE/Soft touch

 All bottles are available in mechanical recycled PP or PE and in bio-sourced.

* Many closures are approved for these bottles, please contact us.



QUADRATUS

Size	Neck*	Diameter	Material 
100 ml	24/410	37 mm	PET
200 ml	24/410	41 mm	PET

 All bottles are available in mechanical or chemical recycled PET.

* Many closures are approved for these bottles, please contact us.

ELEGANCE



Size	Neck*	Width x Depth	Material 
30 ml	Specific	36 mm x 21 mm	PP/PE/Soft touch
200 ml	24/410	70 mm x 36,5 mm	PP/PE/Soft touch
200 ml	24/410	69 mm x 32 mm	PET d'extrusion

 All bottles are available in mechanical recycled PP or PE and in bio-sourced.

* Many closures are approved for these bottles, please contact us.

SQUARE




Size	Neck*	Width x Depth	Material 
100 ml	Specific	51 mm x 23 mm	PP/PE/Soft touch
150 ml	Specific	61 mm x 28 mm	PP/PE/Soft touch
200 ml	Specific	61 mm x 28 mm	PP/PE/Soft touch

 All bottles are available in mechanical recycled PP or PE and in bio-sourced.

* Many closures are approved for these bottles, please contact us.

ABSOLUE



Size	Neck*	Diameter	Material 
15 ml	18/400	27 mm	PP/PE/Soft touch
60 ml	20/410	40,6 mm	PP/PE/Soft touch
200 ml	20/410	48,3 mm	PP/PE/Soft touch

 All bottles are available in mechanical recycled PP or PE and in bio-sourced.

* Many closures are approved for these bottles, please contact us.

BOSTON



Size

500 ml

Neck*

28/410

Diameter

77 mm

Material 


PP/PE/Soft touch

 All bottles are available in mechanical recycled PP or PE and in bio-sourced.

* Many closures are approved for these bottles, please contact us.



HORIZON


Size	Neck*	Diameter	Material 
50 ml	18/400	32 mm	PP/PE/Soft touch
200 ml low shape	24/410	52 mm	PP/PE/Soft touch
500 ml low shape	28/410	71 mm	PP/PE/Soft touch

 All bottles are available in mechanical recycled PP or PE and in bio-sourced.

* Many closures are approved for these bottles, please contact us.

QUALIDERMA



Size	Neck*	Diameter	Material 
200 ml	24/410, Twisto	34 mm on top, 61 mm on bottom	PP/PE/Soft touch
250 ml	24/410, Twisto	34 mm on top, 65 mm on bottom	PP/PE/Soft touch
400 ml	24/410, Twisto	34 mm on top, 77 mm on bottom	PP/PE/Soft touch

 All bottles are available in mechanical recycled PP or PE and in bio-sourced.

* Many closures are approved for these bottles, please contact us.



MAKE UP


Size	Neck*	Width x Depth	Material 
30 ml	Specific	42 mm x 22 mm	PP/PE/Soft touch

 All bottles are available in mechanical recycled PP or PE and in bio-sourced.

* Many closures are approved for these bottles, please contact us.

HARMONIE




Size	Neck*	Diameter	Material 
50 ml	20/410	39 mm	PP/PE/Soft touch
100 ml	24/410	48 mm	PP/PE/Soft touch
200 ml	24/410	59 mm	PP/PE/Soft touch
300 ml	24/410	65 mm	PP/PE/Soft touch
400 ml	24/410	71 mm	PP/PE/Soft touch

 All bottles are available in mechanical recycled PP or PE and in bio-sourced.

* Many closures are approved for these bottles, please contact us.

PERLA



Size	Neck*	Diameter	Material 
15 ml	Specific	21 mm	PP/PE/Soft touch
9 ml	Specific	19 mm	PP/PE/Soft touch



 All bottles are available in mechanical recycled PP or PE and in bio-sourced.

* Many closures are approved for these bottles, please contact us.

JOYCE

Size	Neck*	Width x Depth	Material 
50 ml	Specific	45 mm x 22 mm	PP/PE/Soft touch
100 ml	Specific	51 mm x 25 mm	PP/PE/Soft touch
200 ml	Specific	60 mm x 29 mm	PP/PE/Soft touch

 All bottles are available in mechanical recycled PP or PE and in bio-sourced.

* Many closures are approved for these bottles, please contact us.



HORIZON TOTTLE

Size	Neck*	Diameter	Material 
100 ml	22/400	41 mm	PP/PE/Soft touch

 All bottles are available in mechanical recycled PP or PE and in bio-sourced.

* Many closures are approved for these bottles, please contact us.

Customer service:

QUALIFORM

Parc Industriel Ouest

Veyziat

01100 OYONNAX

FRANCE

Email: info@qualiform.pro

Phone: + 33 4 74 73 17 86

www.qualiform.pro



Qualiform is a member of
Certina Packaging

