

Fabric Trend for Intimate series

SS27

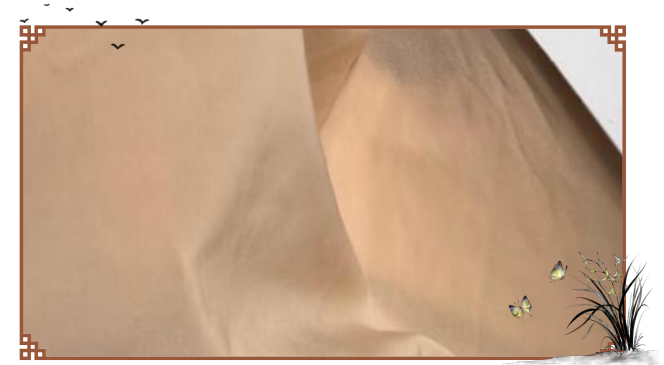
From Grand Fine

#NJ36001S-1

152CM 140GSM 84%Nylon
16%Spandex
Singel Jersey/Weft Knit

#NJ36053S

140CM 120GSM 85%Nylon
15%Spandex
Singel Jersey/Weft Knit



Key Features

- Silky Smooth Touch: Semi-dull nylon FDY yarns offer a gentle, skin-friendly texture that feels luxuriously soft against the skin.
- Flexible & Form-Fitting: Integrated spandex provides excellent elasticity for freedom of movement, ensuring a snug yet comfortable fit.
- Light & Airy: The knit structure allows optimal airflow, while the 140gsm weight makes it ideal for all-day wear, from underwear to home apparel.
- Durable & Shape-Retaining: Tight 36-gauge knitting enhances fabric resilience, maintaining its form and quality wash after wash.

Ideal For

- Underwear, briefs, sleepwear, and loungewear – where everyday comfort meets effortless style.

#NJ36001S-1
#NJ36053S
Print



Soft and stretchy knitted fabrics, comfortable to wear.
Unique patterns add charm to your loungewear and sleepwear.



Lightweight, cottony, comfortable and skin-friendly weft-knitted plain fabrics with different prints, prints, perfect for loungew for lounge.

#NJ32006S
#NJ32068
Print

NJ32004

【Key Features】

- **Luxurious Matte Finish:** Crafted from 92% 70D/48F Matte Nylon FDY, this fabric boasts a sophisticated matte surface with a soft, elegant luster.
- **Supreme Skin-Friendly Feel:** The cloth is incredibly smooth and delicate to the touch. The perfect blend of 92% Nylon and 8% 20D Spandex offers unparalleled comfort, feeling like a second skin.
- **Excellent Elasticity & Fit:** Integrated with 20D fine Spandex, it provides just the right amount of stretch. It moves freely with your body, offering a snug yet unrestrictive fit.
- **Superior Craftsmanship:** Woven on high-density 32-gauge machines, ensuring a tight structure and refined texture for exceptional quality.

Weft-Knit Softness, Matte and Skin-Friendly —
Your Go-To Choice for Intimate Comfort.



【Key Features】

- **Luxurious Matte Finish:** Crafted from 92% 70D/48F Matte Nylon FDY, this fabric boasts a sophisticated matte surface with a soft, elegant luster.
- **Supreme Skin-Friendly Feel:** The cloth is incredibly smooth and delicate to the touch. The perfect blend of 92% Nylon and 8% 20D Spandex offers unparalleled comfort, feeling like a second skin.
- **Excellent Elasticity & Fit:** Integrated with 20D fine Spandex, it provides just the right amount of stretch. It moves freely with your body, offering a snug yet unrestrictive fit.
- **Superior Craftsmanship:** Woven on high-density 32-gauge machines, ensuring a tight structure and refined texture for exceptional quality.

#NJ32004 152cm 150gsm
92% Nylon 8% Spandex

NJ36002T

140cm 125gsm 83%Nylon 17%Spandex

Key Features】

- **Brilliant Bright Finish:** At its heart lies 83% 40D/34F Triangular Bright Nylon FDY, which creates a dazzling, luminous surface with a silk-like sheen, instantly elevating any garment to a new level of luxury.
- **Supremely Smooth & Skin-Friendly:** The fabric offers an exceptionally smooth and delicate hand-feel. It provides a comfortable wearing experience without compromising on its radiant appeal.
- **Superior Elasticity & Shaping:** With a high content of 17% 20D Spandex, it delivers enhanced elasticity and a sculpting fit. It hugs the body comfortably without restriction, allowing freedom of movement in a cascade of light.
- **High-Gauge Precision:** Knit on advanced 36-gauge machines, the fabric boasts a denser, finer texture. This ensures even light distribution and remarkable durability, showcasing exceptional craftsmanship.



#NJ36002T



Luxurious Comfort: Soft Knit Nightdress

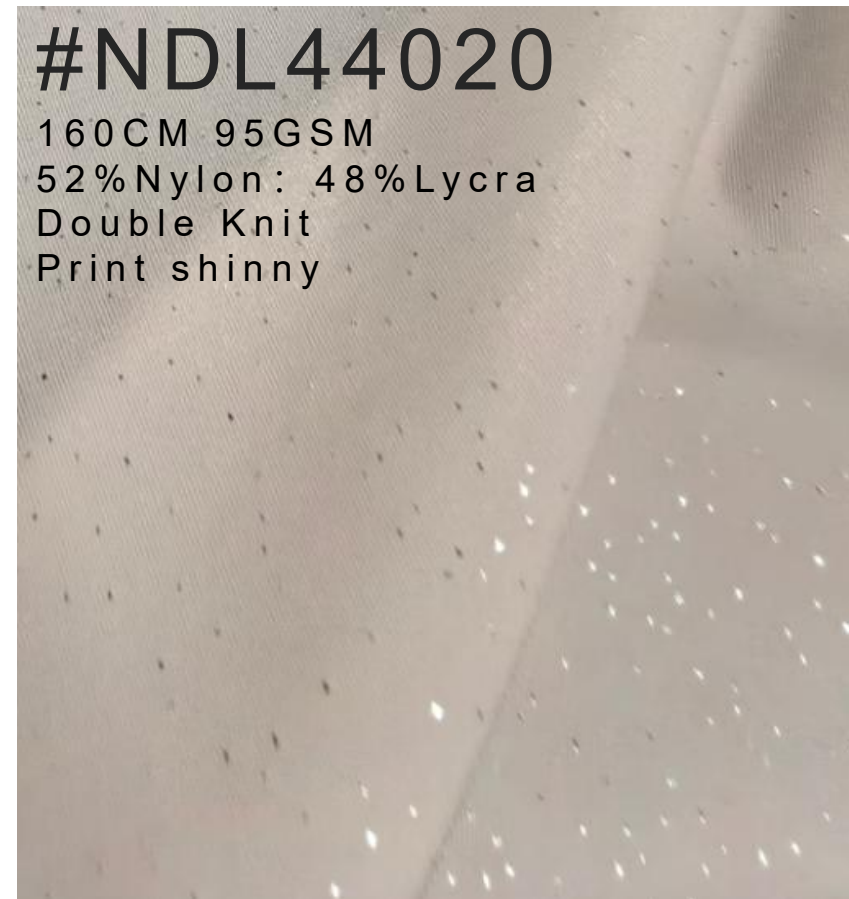
Indulge in the silky smooth texture of our 125gsm warp-knitted fabric. This elegant slip dress features adjustable ruffled hem and adjustable straps.



Key Benefits

- Sophisticated Metallic Effect: Our advanced printing technique creates a subtle, foil-like sheen that is integrated into the fabric, not layered on top. The result is a luxurious luminosity with a perfectly soft hand-feel, free from the stiff or plastic texture of traditional foils.
- Silky-Soft Hand Feel: The ultra-fine 7D bright nylon yarns give this fabric an incredibly smooth, silky texture that feels divine against the skin, enhanced by the dense 44-gauge double-knit construction.
- Second-Skin Support & Shape: With 48% Lycra® content, this fabric offers exceptional stretch and superior recovery, providing gentle, comfortable shaping and a flattering, supportive fit that moves with you.
- Lightweight & Breathable: At 95gsm, it remains remarkably light and breathable, making it ideal for creating elegant intimates, shapewear, and stylish loungewear that feels as good as it looks.

Perfect For Premium Intimates, Shapewear, Luxury Loungewear, Designer Sleepwear.



Soft pearlescent silver-printed fabric with gentle luster, crafting elegant intimates and cozy loungewear for refined comw refined,

NJ44003S Extreme-SOFT fabric for one size for all



Quality

Comp.: 76%Nylon: 24%

Spandex

Width: 152cm

Weight: 100gsm

Guage: 44GG



Structure

Light, Skin-friendly, Extremely soft

It's made of Micro Nylon and elastant spandex from Hyusong, Knitted with fine guage 44 as the weft knit structure and dye and finishing with superior technology. Compact, cotton feel, brushed-like, the feeling is delicate, comfortable and soft. Good skin-affinity and free extension performance.

There is the advantages of abrasion resistance and high breaking force. Than the similar heavy cotton fabric.

Stretch

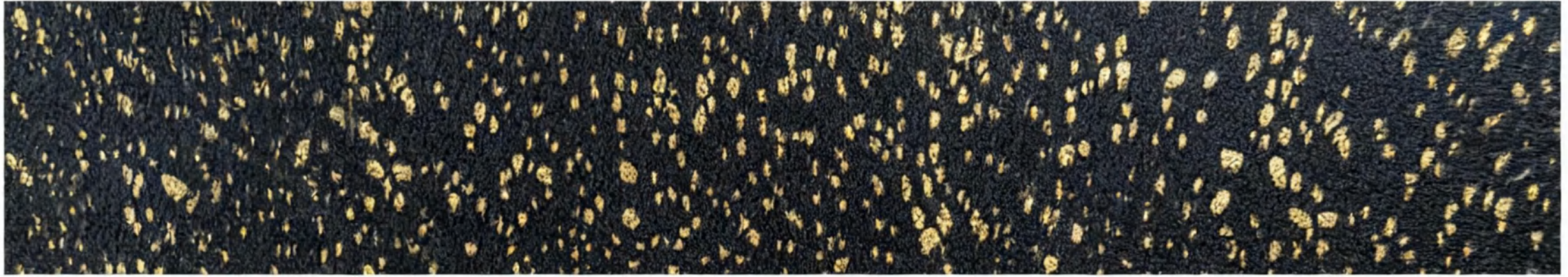
High resilience, Full size

According to the reasonable combination of 76% nylon and 24% spandex, the warp and weft elasticities are excellent, good at elastic expansion ,ductility and recovery, more durable stability, quite nice to be wearred in long-term.

Features

moisture absorpction and perspiration

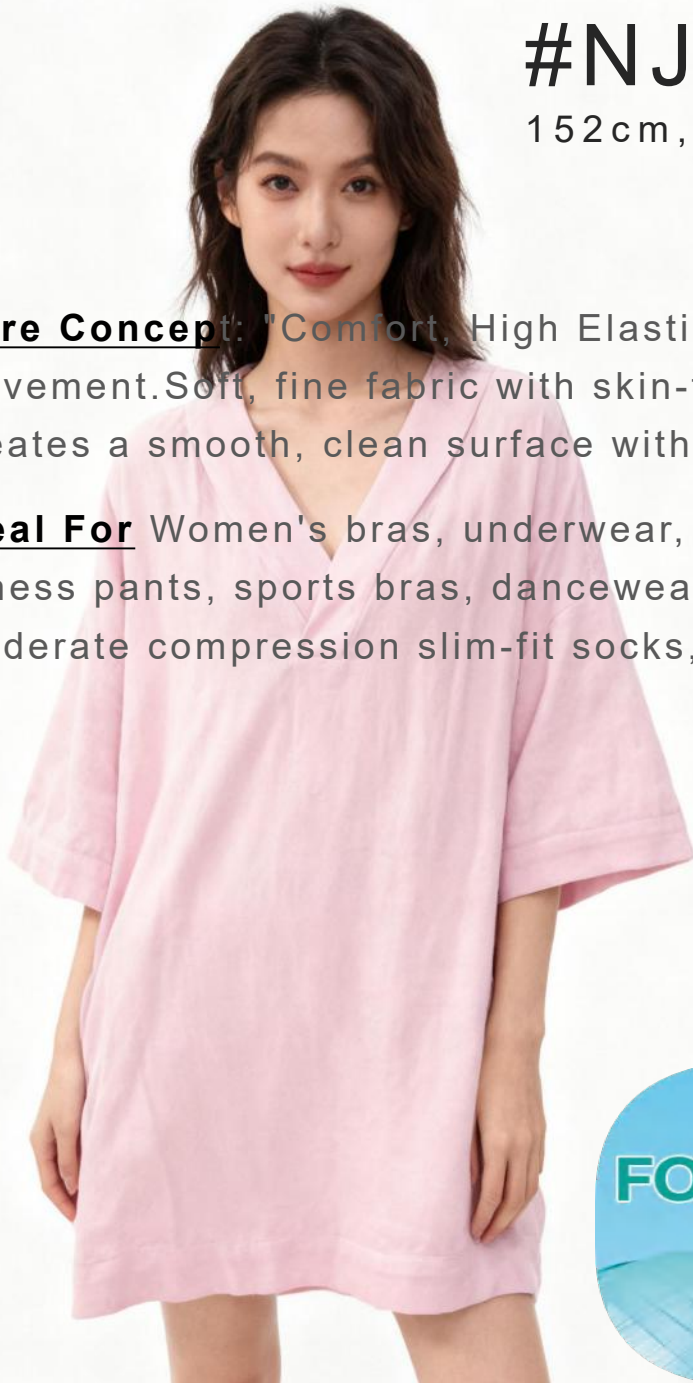
The fabric with hydrophilic, achieve good moisture absorpction and perspiration function. Good pendant and soft feel finishing effect.



#NJ44003S
Gold Foil

100gsm full-size weft-knitted cottony fabric, skin-friendly and comfortable. Specially designed with gold foil pattern, 00 /sod casual styles.



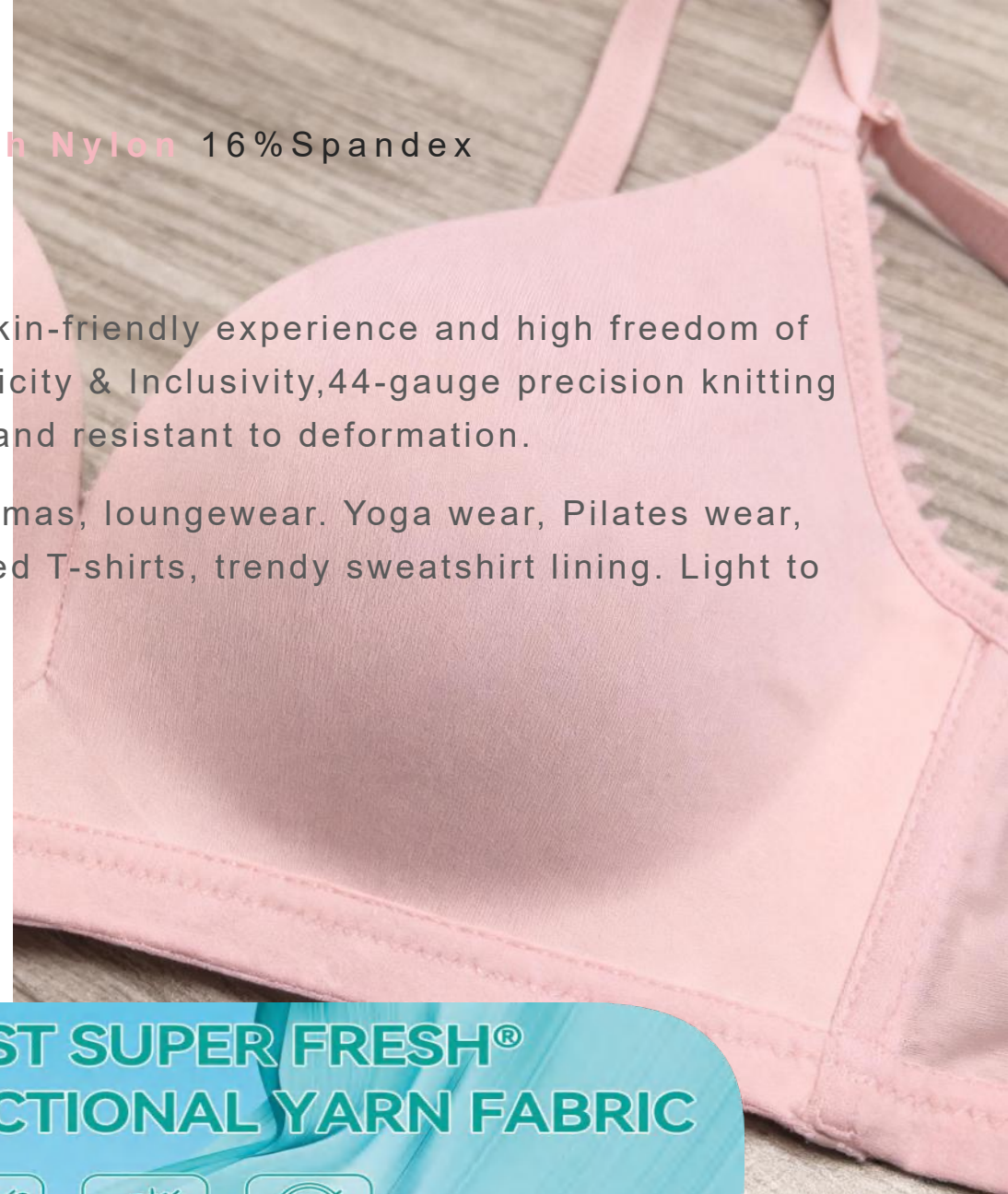


#NJ44035,

152cm, 120gsm, 84% **Super Fresh Nylon** 16% Spandex

Core Concept: "Comfort, High Elasticity, Quality Feel", Strong skin-friendly experience and high freedom of movement. Soft, fine fabric with skin-friendly touch, excellent Elasticity & Inclusivity, 44-gauge precision knitting creates a smooth, clean surface with an advanced feel, durable and resistant to deformation.

Ideal For Women's bras, underwear, shapewear, camisoles, pajamas, loungewear. Yoga wear, Pilates wear, fitness pants, sports bras, dancewear. Versatile base layers, fitted T-shirts, trendy sweatshirt lining. Light to moderate compression slim-fit socks, shaping pants.



**WORLD'S FIRST SUPER FRESH®
FOUR-IN-ONE FUNCTIONAL YARN FABRIC**



Anti-mold



Anti-odor



Anti-mite



Antibacterial

#NT40017B

160cm 160gsm
71%Nylon 29%Spandex



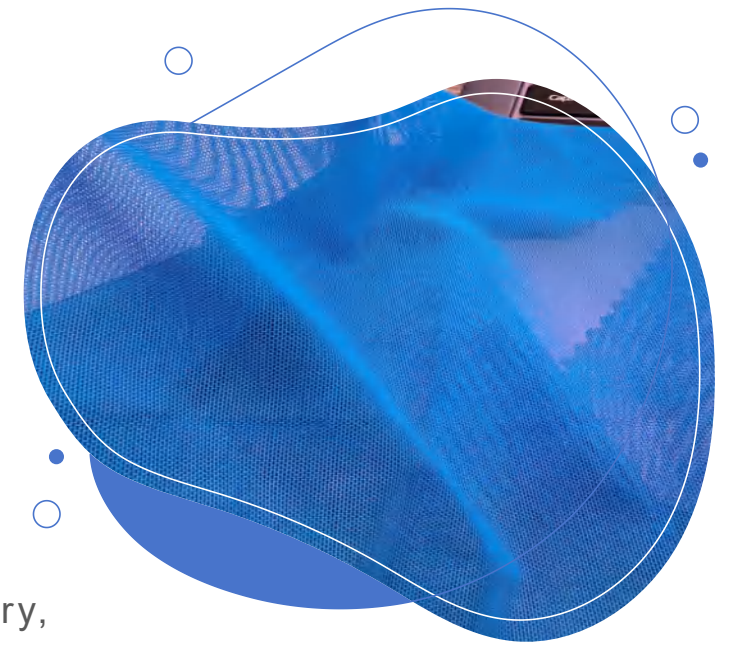
**Warp Knit Ciré Four-way-Stretch Fabric |
Luminous Luxury,4-Way Stretch
Skin-Softening Finish**



#NR32003S

152CM 100GSM
84%Nylon 16%Spandex
Fancy Mesh

**Long running mesh....
105gsm,130gsm,
155gsm,170gsm,190gs,**



Key Advantages

- *German Precision Engineering: Manufactured on renowned Karl Mayer machinery, this fabric guarantees consistent, high-quality construction, superior dimensional stability, and a refined texture.
- *Unmatched Versatility in Weight: Our extensive portfolio, from ultra-sheer 40gsm to heavy-duty 300gsm, allows designers to select the perfect weight for intimates, activewear, fashion, and accessories, all from one trusted source.
- *Breathable & Resilient: The inherent warp-knit mesh structure promotes optimal airflow for cool comfort. It provides excellent longitudinal stretch and recovery, ensuring freedom of movement and long-lasting durability without sagging.
- *Cross-Category Solution: Streamline your sourcing with a single fabric that performs brilliantly across multiple categories—from the foundation layer to the final fashion statement.

Ideal For Intimates / Shapewear / Loungewear / Fashion Apparel / Athletic Wear / Socks / Scarves / Accessories.



16:9



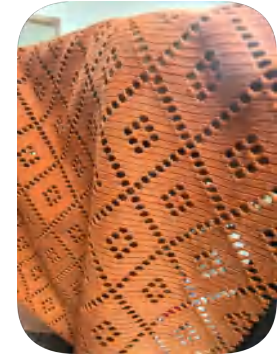
#NR3203S
Print



Lightweight and airy knitted mesh fabrics with unique prints, perfect for elegant lingerie and stylish daily wear.

#NJ28051

145CM 125GSM 87%Nylon 13%Spandex



Key Benefits

- **3D Diamond Pattern:** The raised jacquard diamond design adds a dimension of visual interest and a luxurious texture, setting your designs apart with understated elegance.
- **Soft Matte Hand-Feel:** The fine, matte nylon yarns ensure an exceptionally soft and smooth hand-feel against the skin, offering a premium, non-shiny finish.
- **Comfortable, Easy Fit:** Weighing in at 125gsm, this fabric provides a comfortable, lightweight wear. The integrated spandex allows for flexible movement and a flattering, easy fit that doesn't restrict.
- **Versatile Style:** Seamlessly transitions from loungewear and intimates to casual separates, offering endless possibilities for creating cohesive and stylish collections.

Perfect For

- Premium Intimates, Loungewear, Casual Sets, Skirt & Top Sets, Lightweight Knit Tops.



Versatile warp-knitted jacquard fabric with intricate patterns, perfect for casual wear, intimates and cozy loungewear.

#NJ28051

#NJ28017

130CM 165GSM 87%Nylon 13%Spandex

Key Benefits

*Elegant 3D Clover Motif: The raised jacquard design features a delicate clover pattern, adding a dimension of playful sophistication and visual texture to intimate and loungewear apparel.

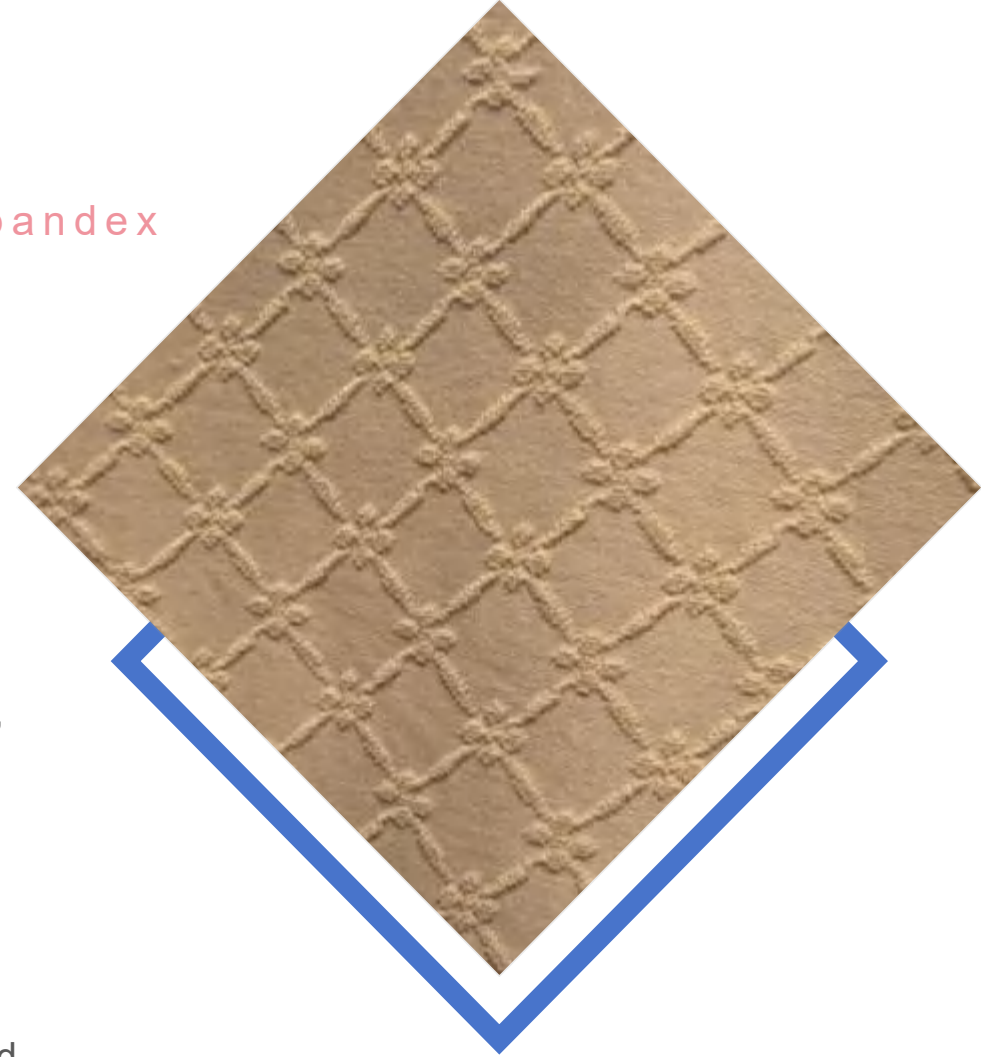
*Smooth Matte Finish: The fine matte yarns create an incredibly soft, smooth hand-feel that is gentle against the skin, offering a non-irritating, premium comfort all day long.

*Plush, Cozy Feel: With a comfortable 165gsm weight, this fabric has a plush, substantial hand that provides a cozy, wrapped-in-feeling without sacrificing movement, thanks to its flexible stretch.

*Elevated Homewear Essential: The perfect union of charming design and cozy comfort, ideal for creating intimates and loungewear that feel as special as they look.

Perfect For

Premium Intimates, Loungewear Sets, Robes, & Sleepwear.





16:9 brand

Elegant beige **Weft Knit** jacquard fabric with classic lattice pattern, ideal for stylish casual wear, comfortable intimewear,

#NJ28017

#ND24005

150CM 180GSM 86%Nylon 14%Spandex

Key Benefits

*Sculpted Fluid Lines: The elegant jacquard design features raised, flowing lines that create a soft, cloud-like pattern, adding a dimension of artistic sophistication and visual tranquility to your designs.

*Plush, Cloud-Like Hand: With a substantial 180gsm weight, this fabric feels luxuriously plush and cozy against the skin, providing a comforting, wrapped-in sensation perfect for relaxation.

*Drapes & Moves with You: The fabric offers excellent drape and flexible stretch for a flattering, forgiving fit that moves with your body, ensuring all-day ease and comfort.

The Art of Relaxation: The serene pattern and super-soft texture make this fabric ideal for creating loungewear and intimates that promote a sense of peace and well-being.

Perfect For

Premium Intimates, Loungewear, Robes, and Sleepwear.



Premium Jacquard Knit Loungewear Collection



Soft & Breathable
Loungewear



Soft & Breathable
Loungewear



Cozy Underwear
for Daily Wear



#ND24005

Jacquard Top

#ND38024 130CM 165GSM 72%Nylon 28%Spandex



Effortless Elegance: High-Stretch Jacquard with Non-Fray Edge

*Refined 3D Stripes: The subtle double-sided vertical stripe adds a touch of sophisticated texture, creating a visually appealing and modern aesthetic for minimalist apparel.

*Cut-and-Sew Efficiency: Its innovative non-fray property enables clean-cutting and seaming, significantly reducing manufacturing steps and costs—perfect for creating seamless or clean-finished designs.

*Second-Skin Comfort: With an exceptional 28% spandex content, it delivers superior 4-way stretch and incredible recovery, offering a weightless, supportive fit that feels like a second skin.

*Versatile & Streamlined: The perfect fusion of style, comfort, and manufacturing efficiency for high-end seamless intimates and minimalist loungewear.

Seamless Intimates, Non-Fray Loungewear, Slim-fit Top & Bottom Sets, Athletic Essentials.

#ND38024



#NJ32054A 155CM 160GSM 85%Nylon 15%Spandex

Key Benefits

- Defined & Delicate Pattern:** The precision jacquard knitting creates raised, well-defined lines and patterns that add a touch of refined texture and visual depth to minimalist designs.
- Silky, Skin-Smoothing Feel:** The innovative blend of matte and semi-dull yarns results in an exceptionally smooth, soft hand-feel with a subtle, luxurious sheen that is gentle against the skin.
- Lightweight & Breathable Stretch:** Weighing just 160gsm, this fabric is remarkably lightweight and breathable. The generous spandex content provides comfortable, all-direction stretch for unrestricted movement and day-long comfort.
- Versatile Day-to-Night Wear:** Perfectly suited for creating pieces that transition seamlessly from supportive intimates to stylish loungewear, offering both a flattering fit and effortless comfort.

Perfect For

Premium Intimates, Lounge Sets, Lightweight Robes, and Sleepwear.





#NJ32054A

Weft Knit

Jacquard Apparel Collection

#NJ28022

160cm 205gsm 86% Nylon 14% Spandex



Underwear



Panties



Panties



Loungewear



Key Benefits

- *Modern Geometric Design:* The precision-knit, raised geometric motif adds a dimension of contemporary texture and sophisticated visual interest to minimalist apparel.
- *Plush, Cozy Hand-Feel:* With a substantial 205gsm weight, this fabric feels luxuriously plush and cozy against the skin, providing a comforting, wrapped-in sensation ideal for loungewear and intimates.
- *Comfortable & Conforming Stretch:* The integrated spandex provides flexible movement and a flattering, forgiving fit that adapts to your body without restriction.
- *Versatile Luxury:* The ideal choice for creating cohesive collections that range from premium intimates to stylish, elevated loungewear, offering a consistent feel of understated luxury.

Perfect For

Premium Intimates, Lounge Sets, Robes, and Sleepwear.



Elaborate jacquard patterns create dimensional texture while maintaining buttery-soft hand feel. The muted luster exudes understated elegance, and superior elasticity ensures seamless comfort for body-hugging wear.



#NJ36091

120cm 180gsm
76% Nylon
24% Spandex

Ideal For

- Intimates/Underwear: Breathable, contour-fit designs with smooth invisibility
- Loungewear/Homewear: Freedom of movement meets cloud-like comfort for relaxed moments

40-Gauge Jacquard Knitted Fabric – Redefining Softness, Redefining Comfort

- Introducing our latest 40-gauge jacquard knitted fabric—engineered for exceptional softness, flexibility, and style. Designed with a high-density weave and an optimal blend of 60% Nylon and 40% Spandex, this fabric offers a lightweight yet durable range of 60–110 GSM, all with a consistent width of 165cm.
- **Key Features**
- Detailed Patterns & Soft Texture:
- Elegant jacquard designs provide a delicate, tactile experience—perfect for stylish and comfortable apparel.
- Soft Stretch, Easy Fit:
- Enhanced with spandex for smooth recovery and a gentle embrace, offering freedom of movement without pressure.
- Breathable & Skin-Friendly:
- Nylon ensures a silky, breathable touch—ideal for all-day wear in loungewear, sleepwear, and undergarments.
- Versatile Application:
- Suitable for a wide range of garments including underwear, loungewear, pajamas, sleep pants, and homewear.
- **Ideal For**
- Underwear · Loungewear · Pajamas · Sleepwear · Home Attire
- Crafted for comfort, designed for everyday moments.



#NJ40025
165CM 95GSM
60%Nylon
40%Spandex





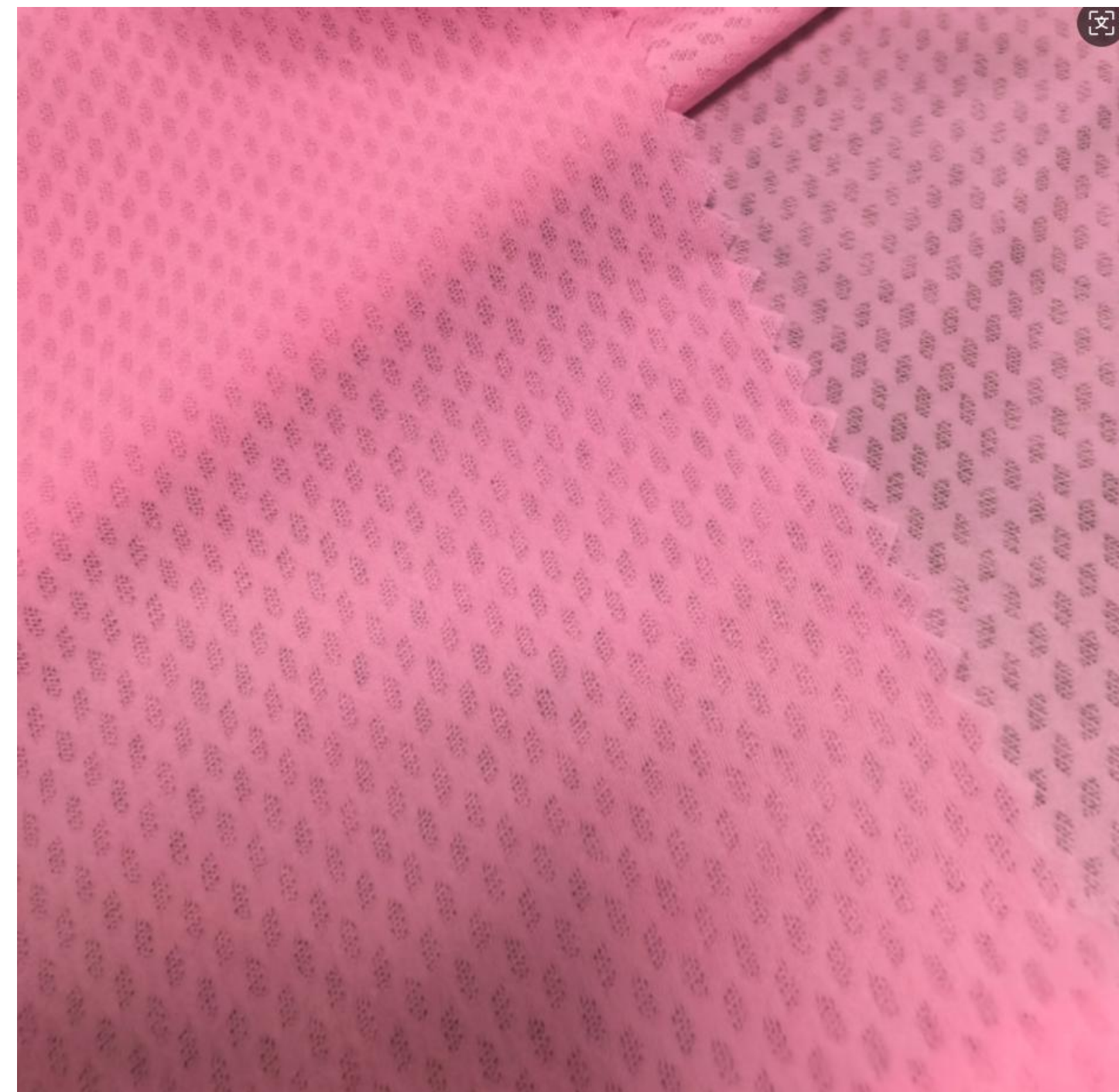
#NJ40024
165CM 90GSM
60%Nylon 40%Spandex



#NJ40023
165CM 100GSM
60%Nylon
40%Spandex



#NJ40018
165CM 105GSM
60%Nylon
40%Spandex





#NJ40026
165CM
100GSM
60%Nylon
40%Spandex





#NJ40022
165CM
60GSM
60% Nylon
40% Spandex





#NJ40019
165CM
60GSM
60%Nylon
40%Spandex

Elegant Intimates Collection

#NJ40017
165CM 90GSM
60%Nylon
40%Spandex

16:9



Lightweight **Weft-Knit** jacquard lingerie in soft hues, featuring delicate patterns for comfort



#NJ40020
165CM 65GSM
60%Nylon
40%Spandex

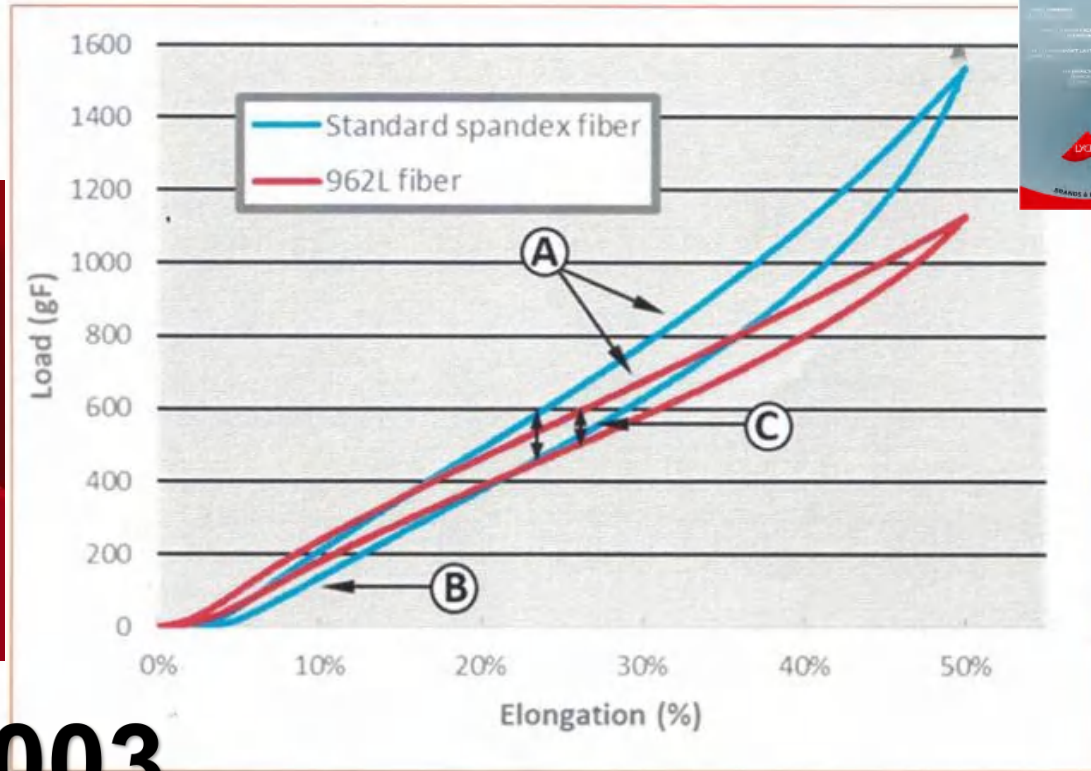


#NDL40003 Adaptive Intelligence: 40-Gauge Interlock with Responsive Comfort

- Meet the future of comfort. Our 40-gauge interlock fabric, crafted with 68% Matte Nylon and 32% Adaptive Lycra®, redefines dynamic wear. With a 135gsm weight and 152cm width, it's engineered to intelligently adapt to your every move.
- **Key Features**
- Responsive Support & Pressure Management: Featuring Adaptive Lycra® that senses your movement, offering gentle hold at rest and targeted support in motion for personalized all-day comfort.
- Stable & Structured Interlock Knit: This secure construction resists curling and provides dependable 4-way stretch that moves with you and retains its shape.
- Soft-Touch Matte Finish: The fine matte nylon yarns deliver a smooth, sleek hand feel and a premium, understated aesthetic.
- Engineered for Dynamic Wear: Ideal for applications where movement and comfort intersect—from yoga and training to premium loungewear and shapewear.
- **Ideal For**: Premium Sports Bras · Yoga Apparel · Training Wear · Shapewear · Comfort-Driven Lounge

LYCRA Myfit=Adaptive

The Science behind the **LYCRA® MyFit™ fiber** centers around unique stretch properties allowing the fabric to comfortably move while retaining its shape



1. **One Size Fits More** vs. standard stretch fabrics, LYCRA® MyFit™ fabrics do this better because they have...

"Wider fit window" (more people feel it is the right size) -> because of softer stretch during extension from 20 -> 60%

"Shaping" (all of those people like the fit) -> because recovery power (holding force) equals most fabrics in the market at 20-30% ELO

2. **Second Skin Performance**
LYCRA® MyFit™ fabrics do this better because they have ...

"Easy Stretch" In the range 20-60% ELO (and higher) 962L fabrics consistently stretch more easily than standard. This means for high motion activities (sports, running, etc.) and for tight garments, the 962L is less restrictive. ("Fit without a fight")... So it moves with you like a second skin.

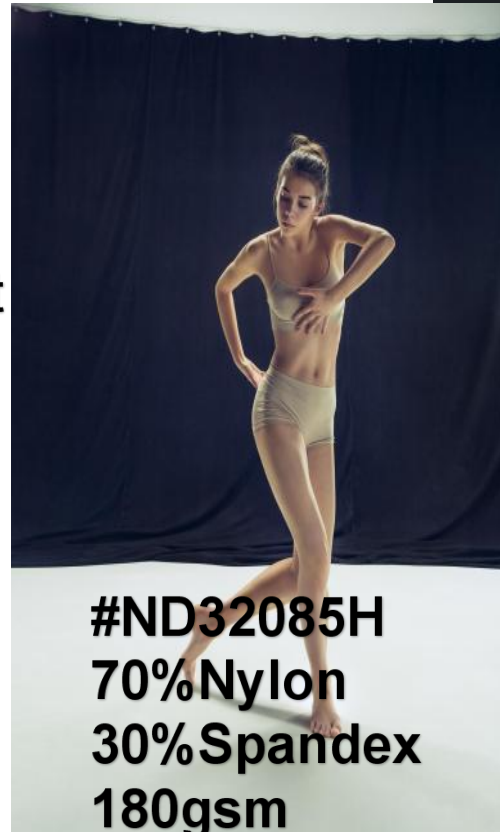
"Good Stay-in Place" -> Recovery power (holding force) equals 162 at 20% stretch, and with lower hysteresis, it stays with you for a stay-in-place and second-skin effect.

NDL40003

- A** Easy Stretch **B** High Recovery **C** Lower Hysteresis

Lightweight Shaping Fabric Technical Description

Through precise blending of high-elasticity spandex and nylon, this fabric achieves directional pressure distribution—enhancing support in the waist and abdominal areas by 40% while maintaining hip mobility. It features instant stretch recovery in <math><0.8</math> seconds and retains 92% elasticity even after 5,000 fatigue tests. The use of profiled cross-section nylon fibers creates an instant skin-cooling effect of 2–3°C upon contact. Ideal for seamless shapewear, recovery activewear, and premium base layers, it is particularly suited for medical-grade pressure management applications such as postpartum recovery and body contour correction.



#ND32085H
70%Nylon
30%Spandex
180gsm

High-Spandex Sculpting Double-knit

Fabric--**anti-slip**

Engineered with an ultra-high spandex content, this innovative double-knit fabric combines targeted compression on one side with a non-slip function on the reverse. The smooth outer layer ensures seamless wear under clothing, while the gripper inner side stays securely in place during movement, offering both firm shaping and all-day comfort. Ideal for modern shapewear and active apparel that demands precision and reliability.

#ND38100
42%Nylon
58%Spande
x
300gsm

